

LYT | T85

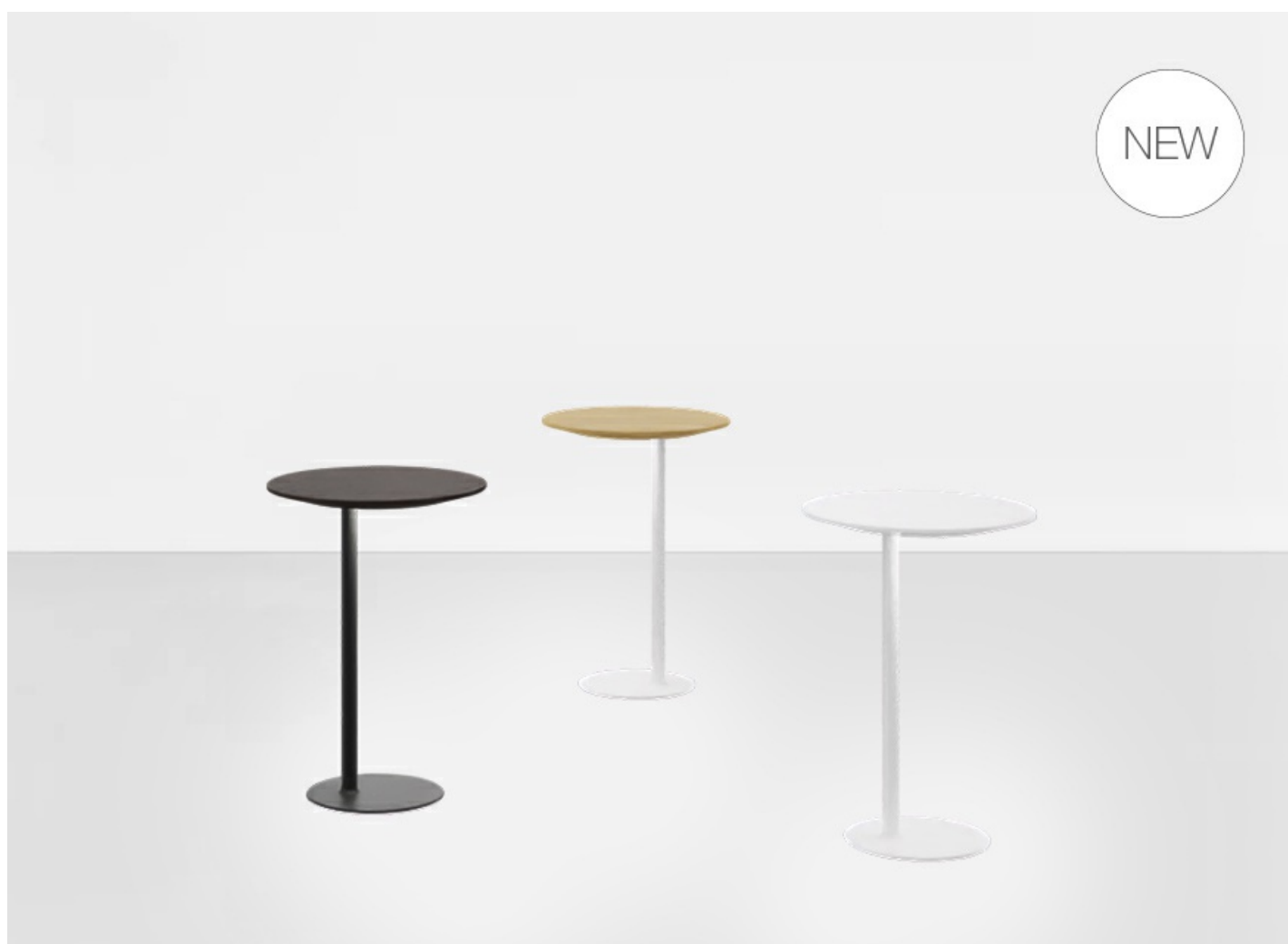
Klaus Nolting | 2024



LYT

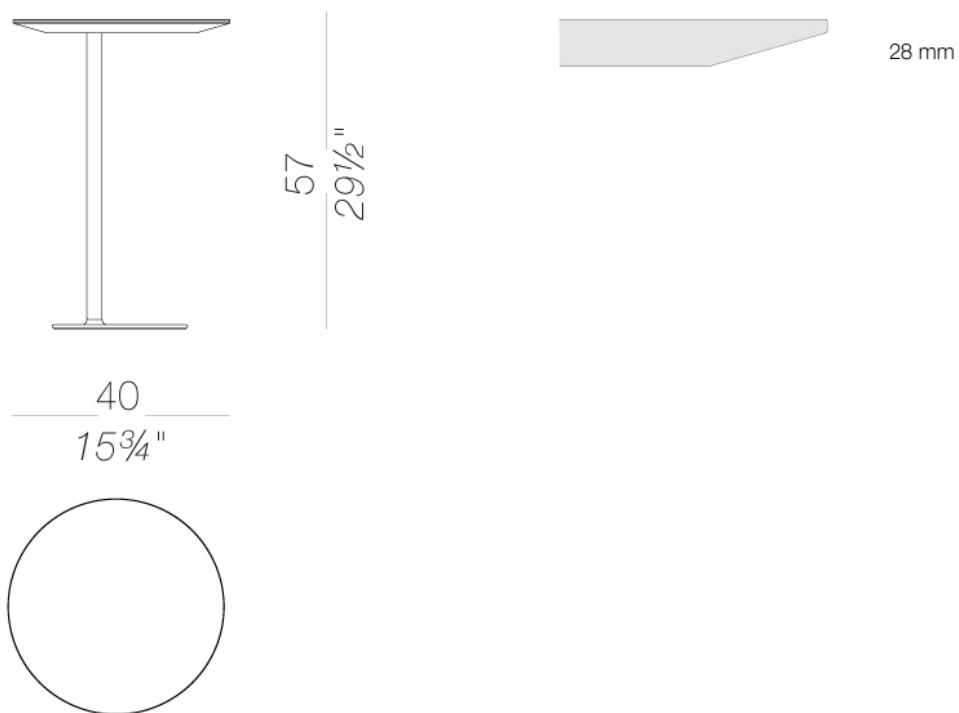
Klaus Nolting | 2024

The uniqueness of an object lies in its wealth of functions. The new table by Klaus Nolting, created for Lapalma, combines three uses in an elegant, contemporary and linear design. Boasting an off-centre leg, LYT is a versatile table that can be easily matched with armchairs and sofas. It is a practical and stylish addition to various contexts, including hotel coffee bars, airport lounges and living rooms at home. LYT is also a charging point for smartphones and tablets as it has a USB-C port, powered by a cable, incorporated in the top. With a LED light discreetly inserted under the top, with integrated battery power, LYT transforms into a gentle, adjustable light for the bedroom. Also surprising in its variety of versions, LYT is available with a top in American walnut, bleached oak or open-pore black, in white or black laminate, and in different lacquered colours.



| T85 Wireless light side table

Rechargeable light table with dimmable LED light and integrated batteries. Powder-coated metal base and column in various colours. Top in various finishes. Ground base with felt.



top



wood
lacquered tortora
1 Colors



wood
lacquered perla
1 Colors



wood
lacquered celeste
1 Colors



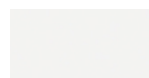
wood
lacquered oliva
1 Colors



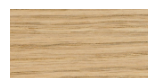
wood
lacquered mattone
1 Colors



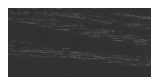
wood
lacquered nero
1 Colors



lacquered
white lacquered
1 Colors



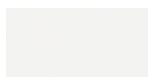
wood
blanché oak
1 Colors



wood
black open pore
1 Colors



wood
Canaletto walnut
1 Colors



HPL 10 mm
white HPL fenix
1 Colors

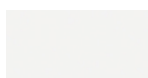


HPL 10 mm
black HPL fenix
1 Colors

frame



powder coating
black
1 Colors



powder coating
white
1 Colors



powder coating
celeste
1 Colors



powder coating
perla
1 Colors



powder coating
tortora
1 Colors



powder coating
oliva
1 Colors



powder coating
mattone
1 Colors



powder coating
pistacchio
1 Colors

consult the portfolio for the range of colors, fabrics, eco-leather, soft-leather.

use and maintenance instructions

Clean all parts in wood, leather, fabric and metal with a damp cloth or a diluted neutral cleaner. Do not use cleaners with alcohol, bleach, solvent or abrasive products. Any liquid spilt on the product must be wiped up immediately. When lifting or moving the product, hold it on the structure and not under the seat. The product should not be subjected to unbalanced weights, as it is designed for a proper rest on the foothold (on four legs or on the base). Our company relieves from any responsibility in case of damage caused to fragile floors. Avoid any improper use of the product: do not step on the product, on the footrest or on the armrests. Avoid any movements that could compromise the proper functionality of the product or the safety of the users. Wood and leather, being natural materials, could be easily damaged. Small impurities or imperfections are within quality standard range. Do not expose the product to weather conditions or atmospheric agents, nor to heat sources over 40°C. Also products for outdoor use could be afflicted by atmospheric agents. The product could undergo possible exterior changes due to particular exposure to heat, humidity and saltiness. An appropriate and frequent maintenance and cleaning of the product enhances its durability. The product could change colour and shade, if exposed to direct sunlight. Maintenance has to be carried out by experienced staff. Dispose of the package only after assembling the product, in order to avoid the loss of ironmongery and components. Once the product has been dismantled, the product itself or its components must be given to the public garbage disposal system, according to the legislation in force.