

ADD SOFT

Francesco Rota | 2018



ADD SOFT

Francesco Rota | 2018

Softness is possible. And you can imagine an office that accommodates wide and spacious seating. Time for meetings or simply more time, as at home. In the name of relaxation, the ADD SOFT seating system adds depth and opens up to the most successful art of combinations. With its embracing dimensions, the legs of the frame are reduced in height to make space for comfortable cushions. The tabletops with electric sockets complement the functionality of the sofa. And it is a pity to get up from it.

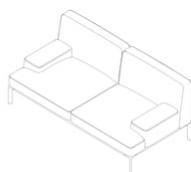




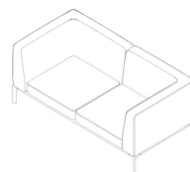
Coffee Table



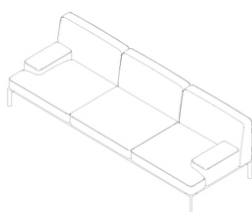
Pouf



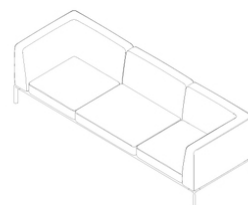
Two seater — low



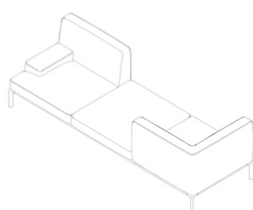
Two seater — high



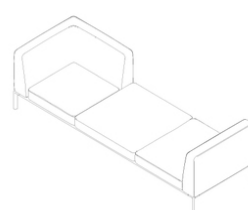
Three seater — low



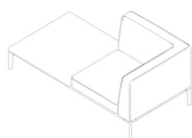
Three seater — high



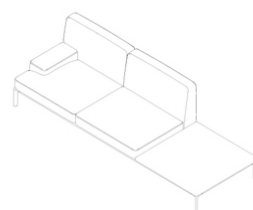
Vis-à-vis



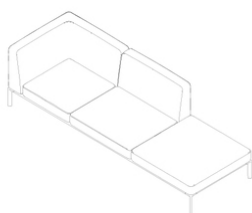
Vis-à-vis - 2



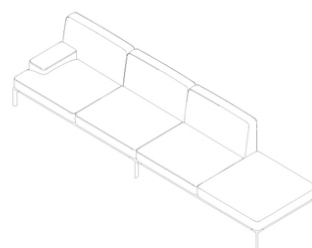
One seater high + table



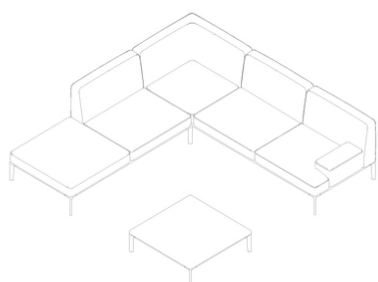
Two seater low + table



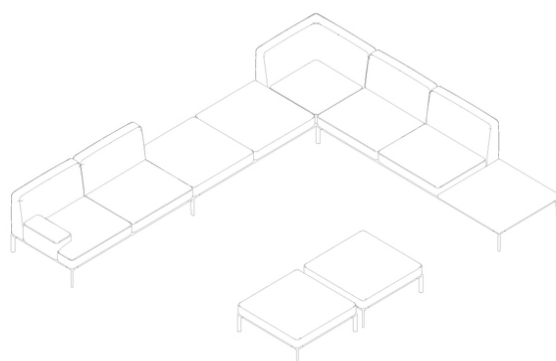
Three seater high — open



Side by side — open



L_shape small — open



L_shape big — open

ADD SOFT

Francesco Rota | 2018

Modular seating system with powder coated aluminium frame and webbed elastic support. Two types of legs in recycled die-cast aluminium, one for the corners and another to connect frames for larger configurations. Backrests and accessories can be fixed to the frame in several positions by using existing holes. Cushions and backrest in polyurethane foam with variation in density and polyester fiber, all fire-retardant, upholstered with removable fabric, soft leather or eco-leather. ADD is complemented by tops in various finishes, also with sockets. All metal parts are powder coated

legs



seat frames

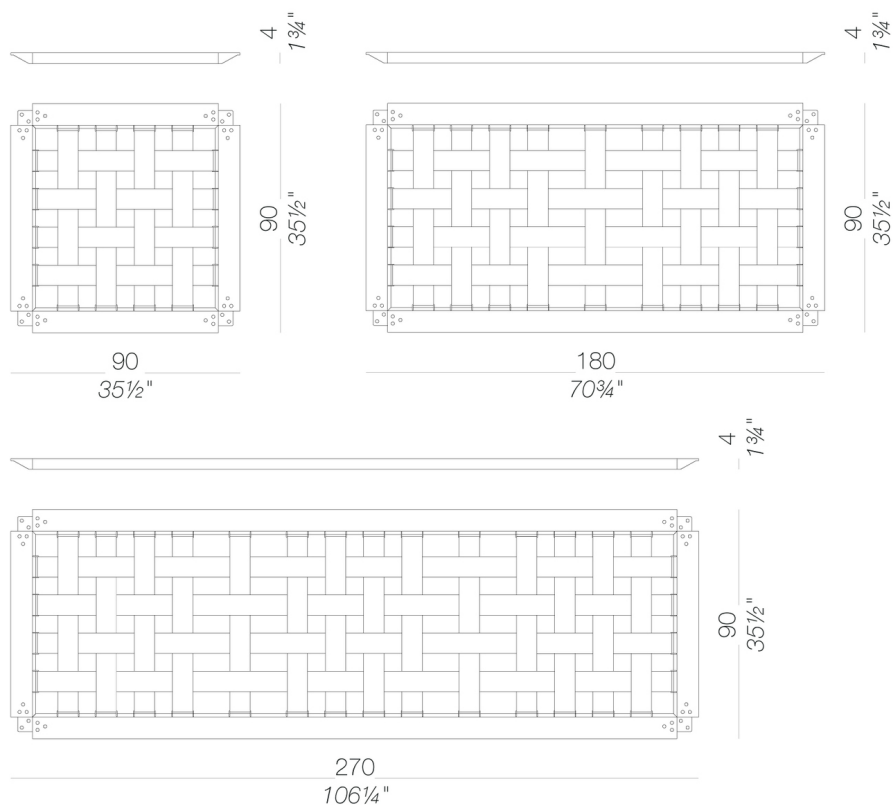
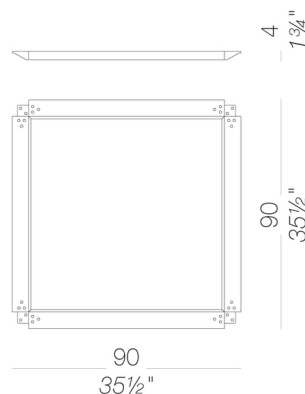


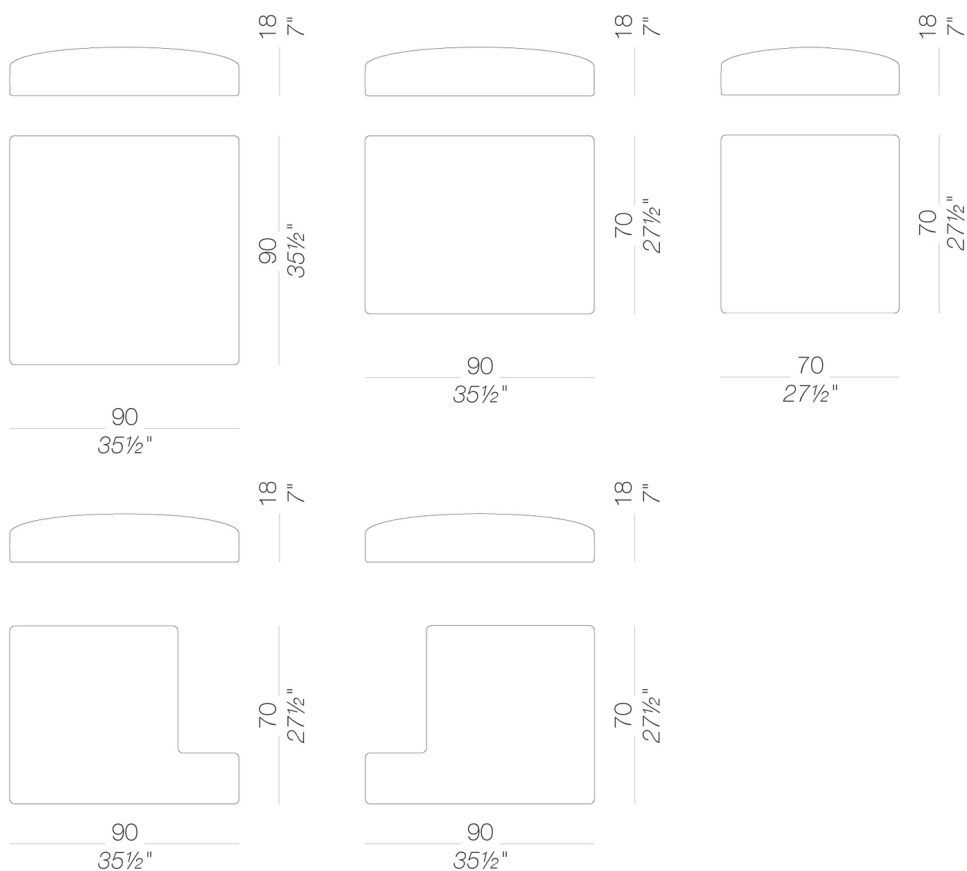
table frames



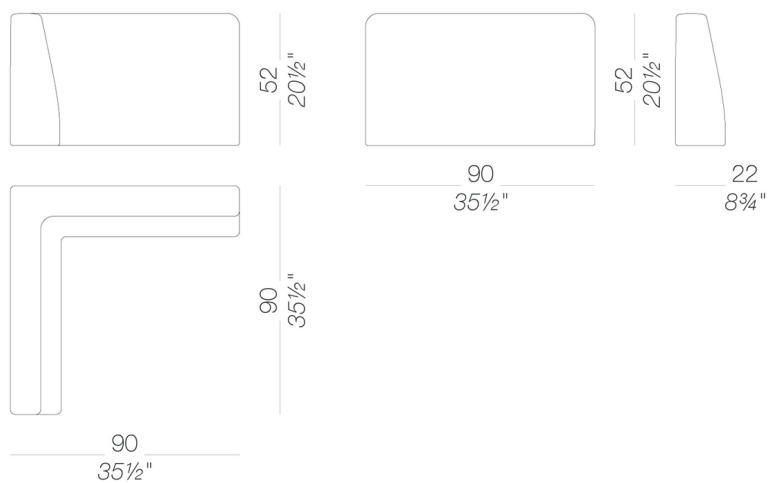
ADD SOFT

Francesco Rota | 2018

cushions



backs



ADD SOFT

Francesco Rota | 2018

armrest

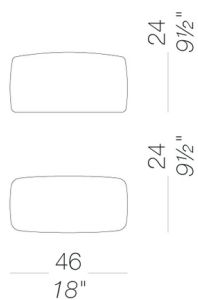
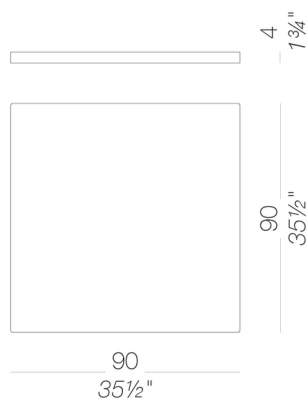


table top



ADD SOFT

Francesco Rota | 2018

upholstery



fabric
Main Line Flax -
Grade. B
57 Colors



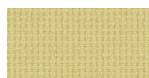
fabric
Blazer - Grade. C
86 Colors



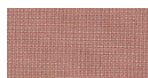
fabric
Chili - Grade. A
47 Colors



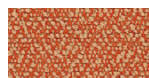
fabric
Umber - Grade. B
36 Colors



fabric
Nobel - Grade. C
30 Colors



fabric
Naveli - Grade. C
24 Colors



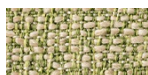
fabric
Fiocco - Grade. B
34 Colors



fabric
Atrium - Grade. C
16 Colors



fabric
Panama - Grade. A
48 Colors



fabric
Sorrento - Grade. B
22 Colors



fabric
Hallingdal 65 -
Grade C
58 Colors



fabric
Canvas 2 - Grade C
45 Colors



fabric
Steelcut Trio 3 -
Grade D
54 Colors



fabric
Remix 3 - Grade C
72 Colors



fabric
Divina MD - Grade D
27 Colors



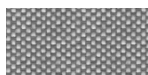
fabric
Fiord 2 - Grade C
39 Colors



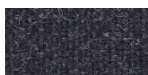
fabric
Divina Melange 3 -
Grade D
38 Colors



fabric
Medley - Grade A
37 Colors



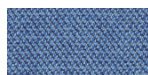
fabric
Maya - Grade A
43 Colors



fabric
Tonica 2 - Grade C
39 Colors



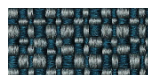
fabric
Jet - Grade A
66 Colors



fabric
Capture - Grade B
43 Colors



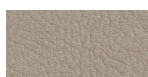
fabric
Crisp - Grade B
40 Colors



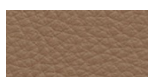
fabric
Ilris - Grade B
24 Colors



fabric
Steelcut 3 - Grade D
40 Colors



ecoleather
Valencia - Grade B
66 Colors



soft-leather
Soft-leather
17 Colors



fabric
Grain - Grade. B
50 Colors

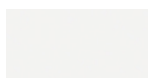


fabric
Re-wool - Grade C
21 Colors

frame

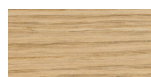


powder coating
black
1 Colors

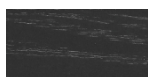


powder coating
white
1 Colors

top



wood
blanch oak
1 Colors



wood
black open pore
1 Colors



laminate
fenix 9/10
2 Colors

consult the portfolio for the range of colors, fabrics, eco-leather, soft-leather.

use and maintenance instructions

Clean all parts in wood, leather, fabric and metal with a damp cloth or a diluted neutral cleaner. Do not use cleaners with alcohol, bleach, solvent or abrasive products. Any liquid spilt on the product must be wiped up immediately. When lifting or moving the product, hold it on the structure and not under the seat. The product should not be subjected to unbalanced weights, as it is designed for a proper rest on the foothold (on four legs or on the base). Our company relieves from any responsibility in case of damage caused to fragile floors. Avoid any

improper use of the product: do not step on the product, on the footrest or on the armrests. Avoid any movements that could compromise the proper functionality of the product or the safety of the users. Wood and leather, being natural materials, could be easily damaged. Small impurities or imperfections are within quality standard range. Do not expose the product to weather conditions or atmospheric agents, nor to heat sources over 40°C. Also products for outdoor use could be afflicted by atmospheric agents. The product could undergo possible exterior changes due to particular exposure to heat, humidity and saltiness. An appropriate and frequent maintenance and cleaning of the product enhances its durability. The product could change colour and shade, if exposed to direct sunlight. Maintenance has to be carried out by experienced staff. Dispose of the package only after assembling the product, in order to avoid the loss of ironmongery and components. Once the product has been dismantled, the product itself or its components must be given to the public garbage disposal system, according to the legislation in force.